

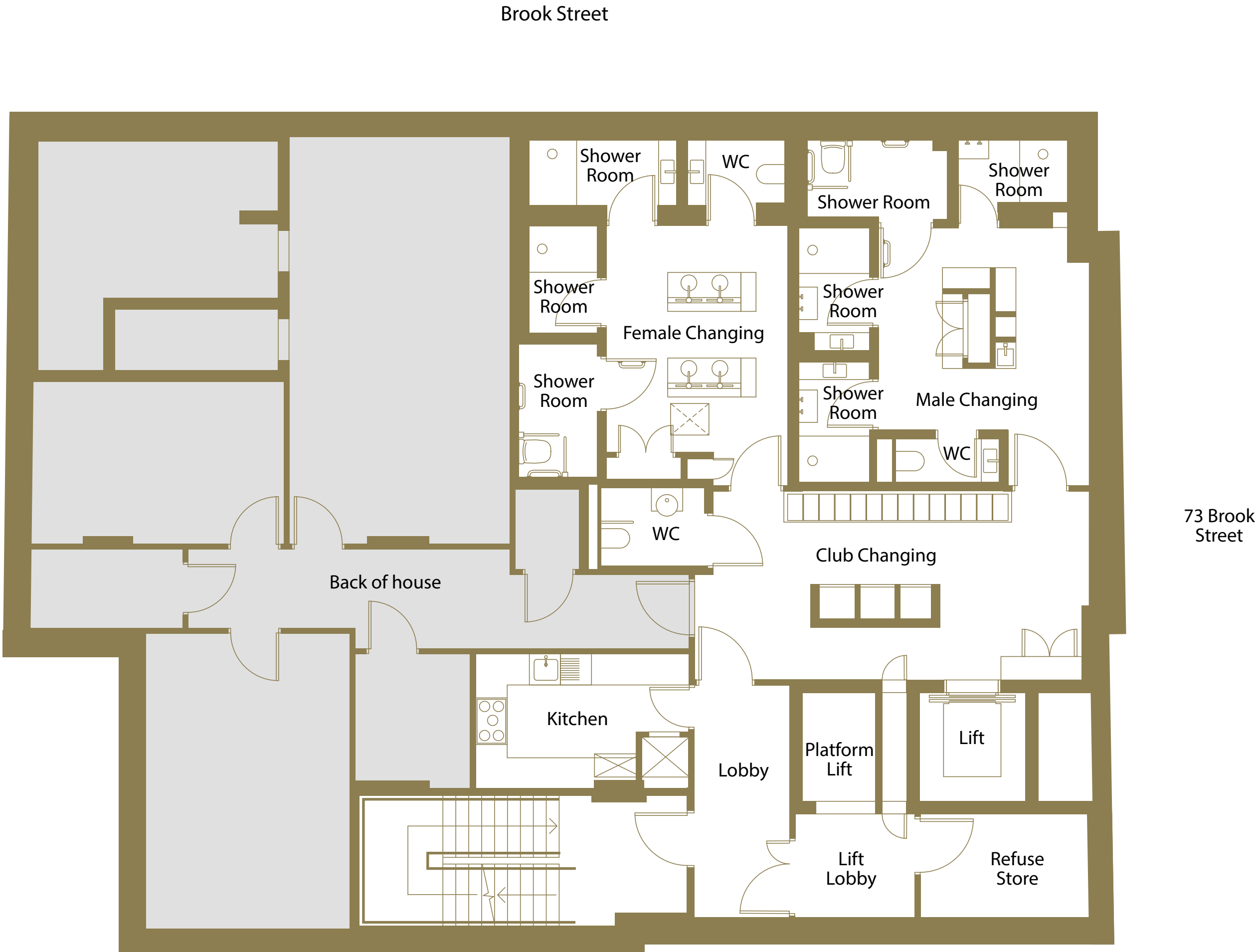
3-7
BROOK
STREET

MAYFAIR

FLOORPLANS

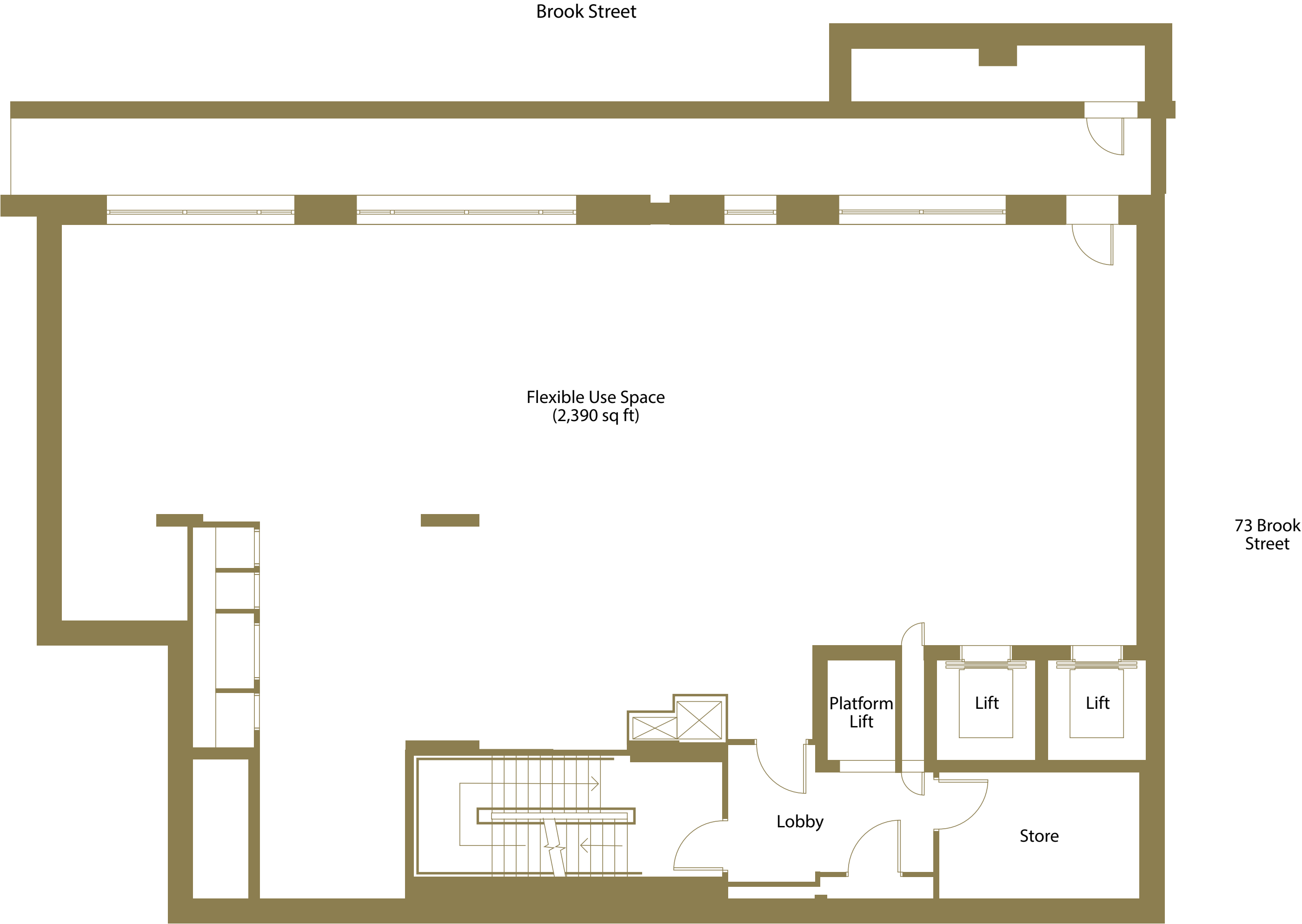
SUB BASEMENT

- Separate male and female changing facilities
- State-of-the-art electrical appliances
- Vanity units
- 28 ventilated lockers
- Basement level access via rear of the building
- Net internal area 1,582 sq. ft.
- Floor to ceiling height: 4.0m



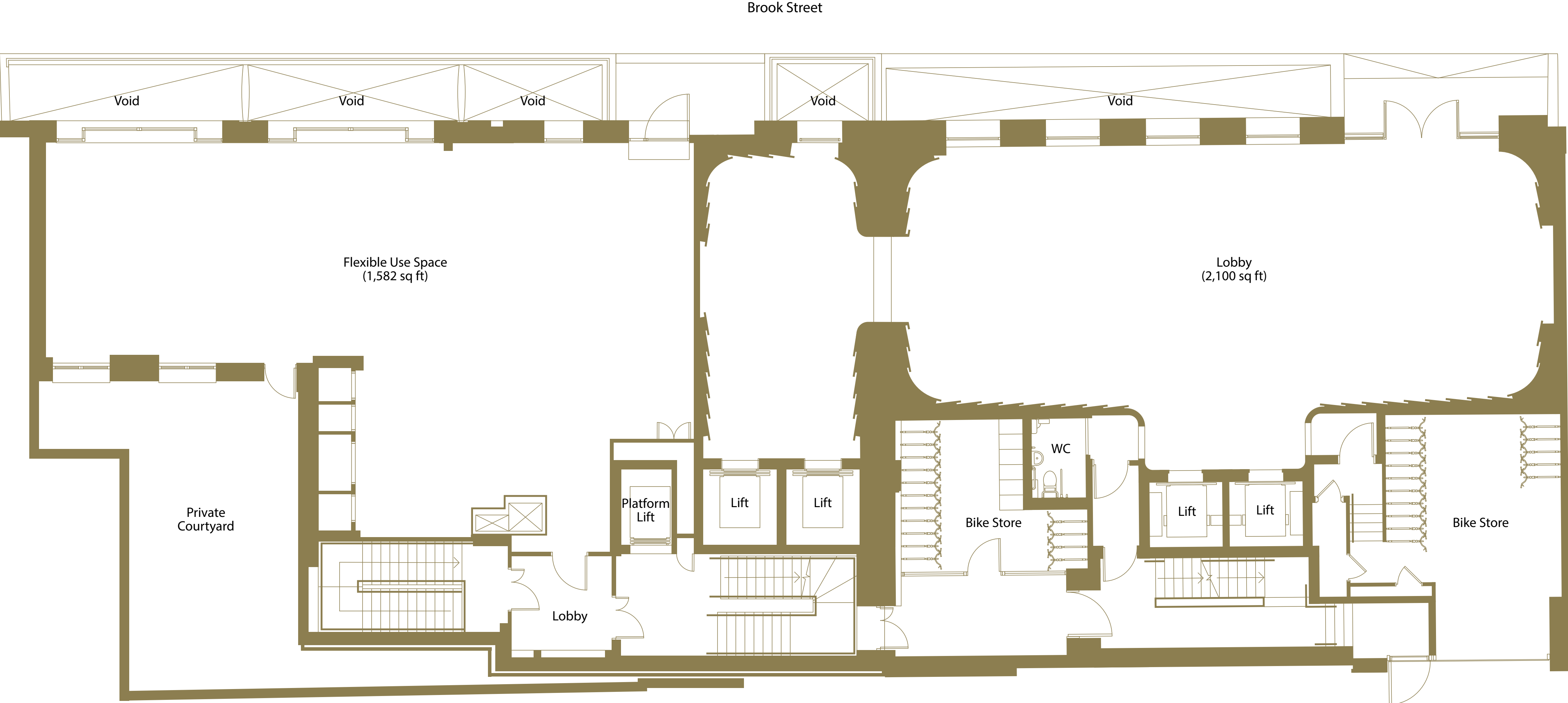
LOWER GROUND FLOOR

- Finished to shell and core
- Bronze surrounds and frames to windows
- Platform lift serving ground to sub basement
- Two eight-person (640kg) lifts with secure fob access, brushed bronze panels and mirror, natural stone flooring and a fully lit diffused feature panel
- Net internal area: 2,390 sq ft
- Floor to ceiling height: 4.0m



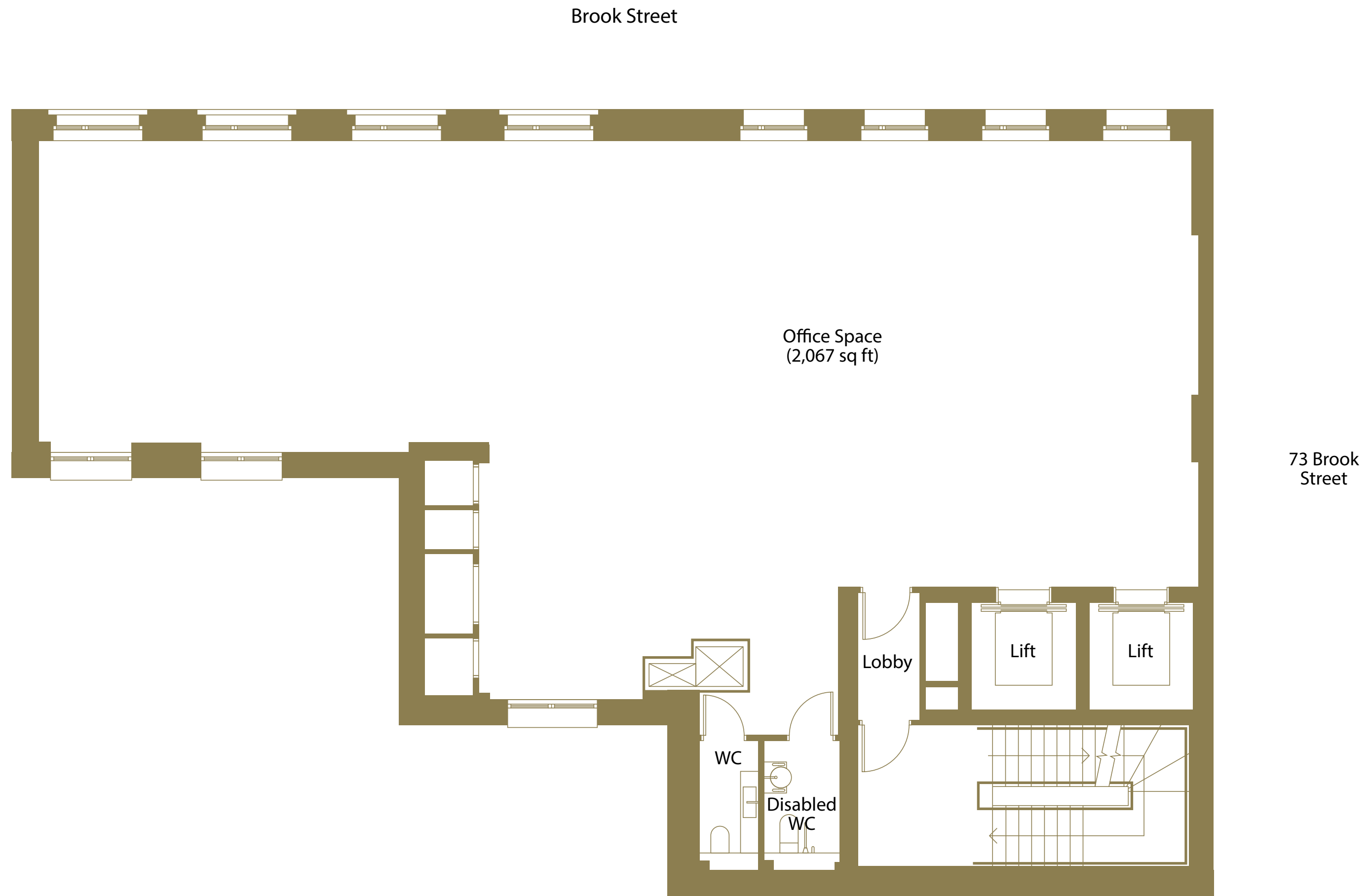
GROUND FLOOR

- Finished to shell and core
- Bronze surrounds and frames to windows
- Private entrance from Brook Street with courtyard
- Two eight-person (640kg) lifts with secure fob access, brushed bronze panels and mirror, natural stone flooring and a fully lit diffused feature panel
- Net internal area: 1,582 sq ft
- Floor to ceiling height: 3.36m



FIRST - FOURTH FLOOR

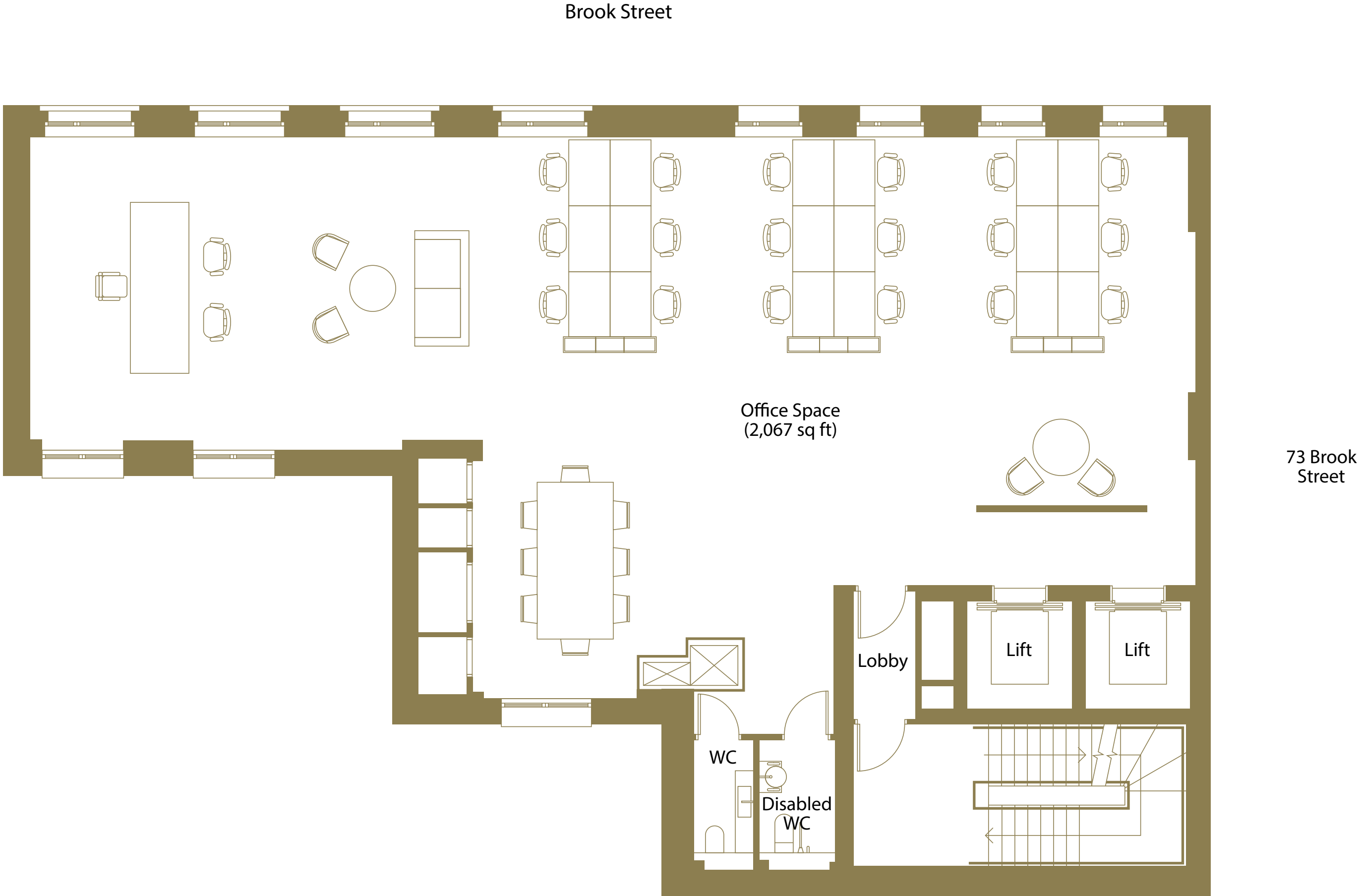
- Available as cat A or shell and core
- Bronze surrounds and frames to windows
- Electric blinds, recessed spotlights and recessed strip lighting
- Full air conditioning with zone temperature control
- Two WCs featured on each floor
- Two eight-person (640kg) lifts with secure fob access, brushed bronze panels and mirror, natural stone flooring and a fully lit diffused feature panel
- Net internal area: 2,067 sq ft
- Floor to ceiling height: 2.6m (cat A finish)



FIRST - FOURTH FLOOR

(OPEN-PLAN LAYOUT)

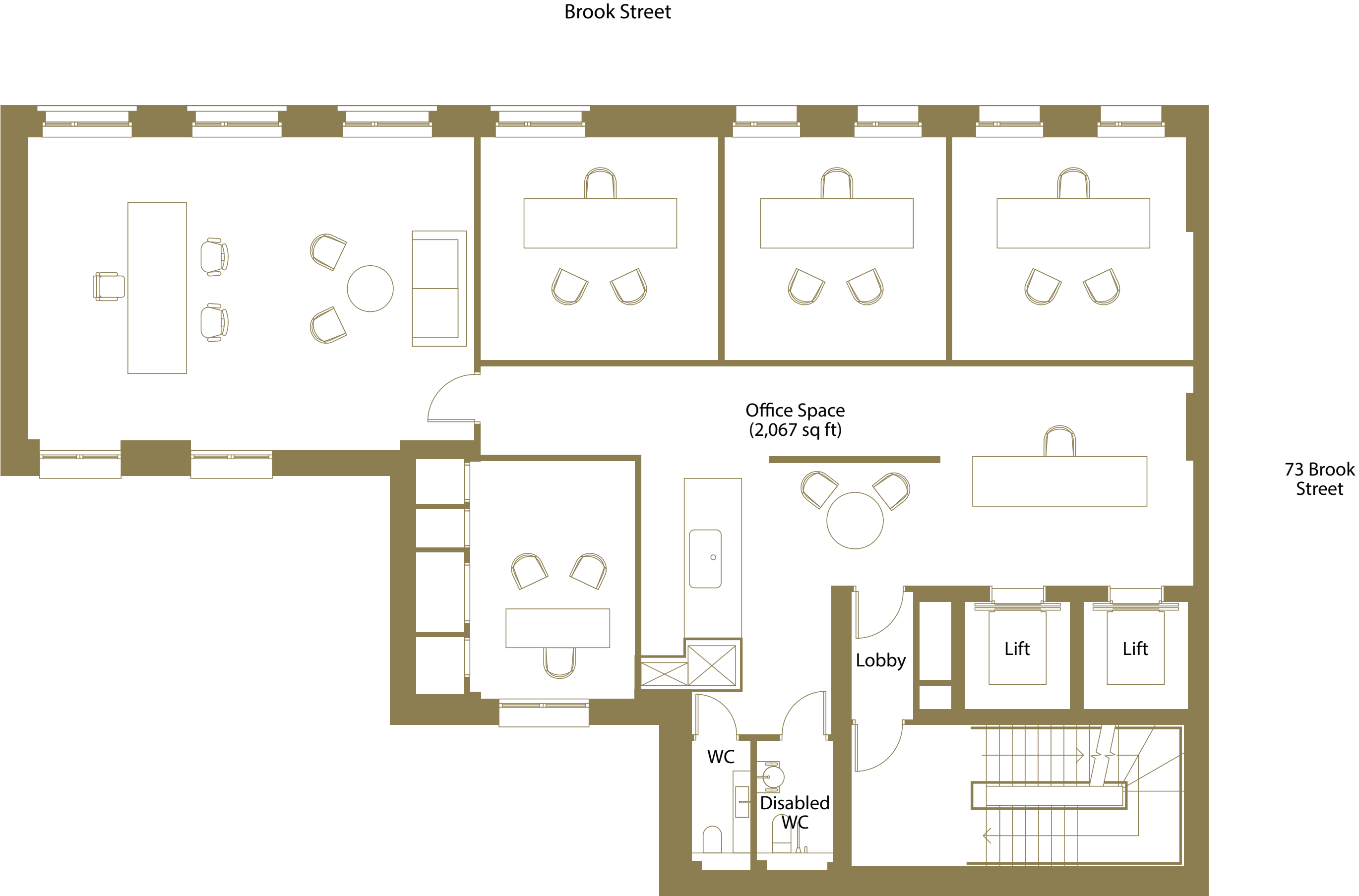
- Available as cat A or shell and core
- Bronze surrounds and frames to windows
- Electric blinds, recessed spotlights and recessed strip lighting
- Full air conditioning with zone temperature control
- Two WCs featured on each floor
- Two eight-person (640kg) lifts with secure fob access, brushed bronze panels and mirror, natural stone flooring and a fully lit diffused feature panel
- Net internal area: 2,067 sq ft
- Floor to ceiling height: 2.6m (cat A finish)



FIRST - FOURTH FLOOR

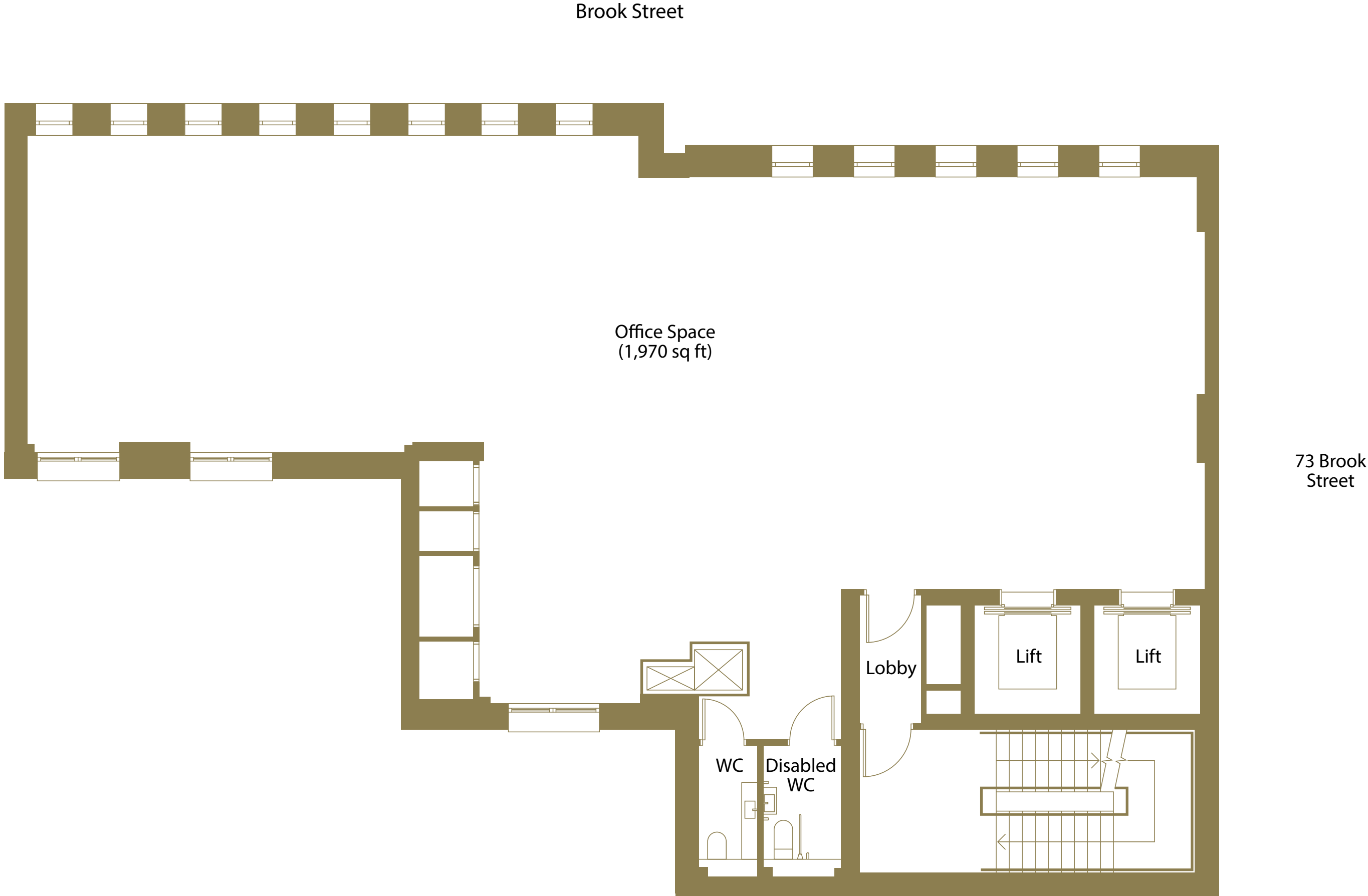
(EXECUTIVE OFFICES)

- Available as cat A or shell and core
- Bronze surrounds and frames to windows
- Electric blinds, recessed spotlights and recessed strip lighting
- Full air conditioning with zone temperature control
- Two WCs featured on each floor
- Two eight-person (640kg) lifts with secure fob access, brushed bronze panels and mirror, natural stone flooring and a fully lit diffused feature panel
- Net internal area: 2,067 sq ft
- Floor to ceiling height: 2.6m (cat A finish)



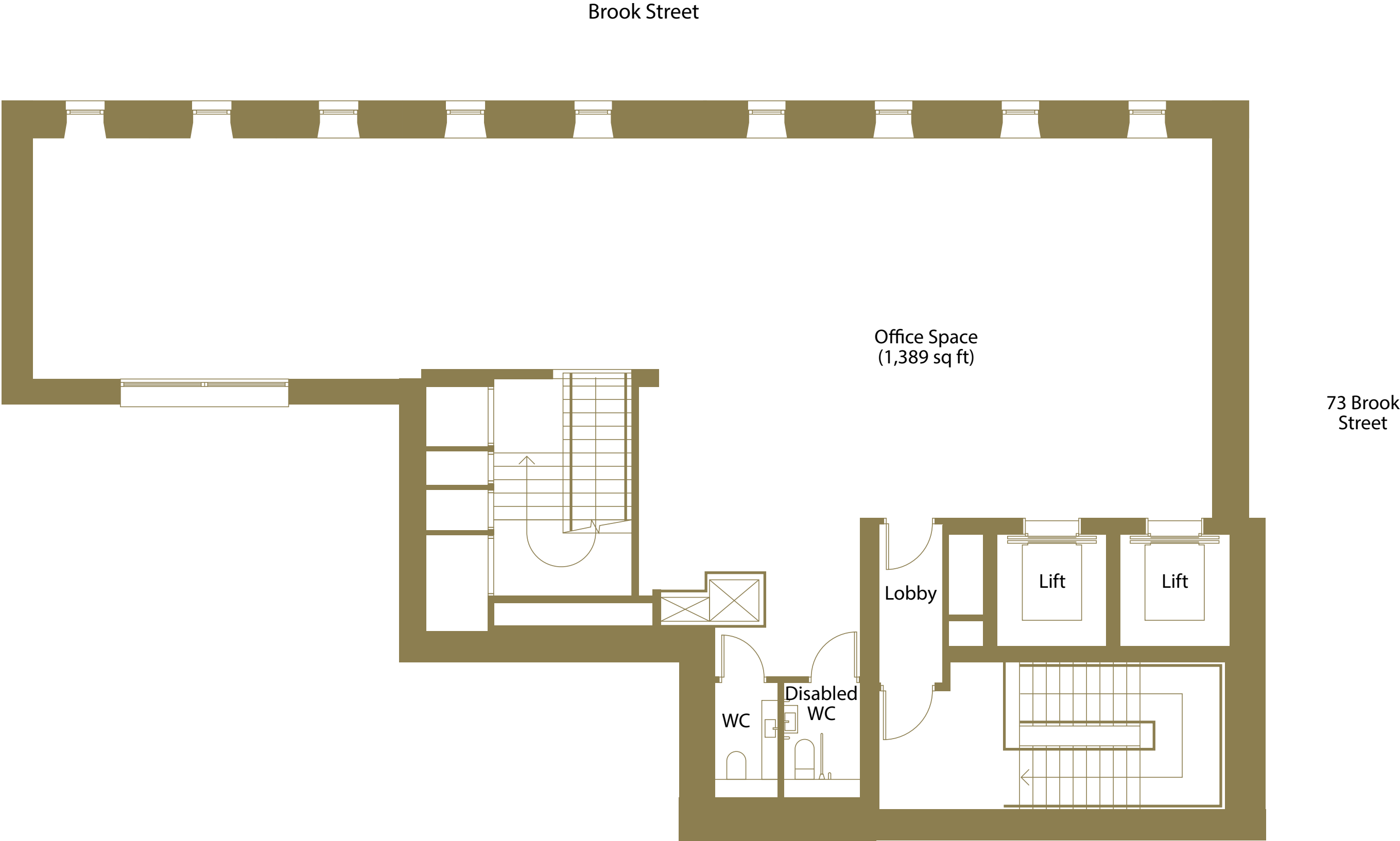
FIFTH FLOOR

- Available as cat A or shell and core
- Bronze surrounds and frames to windows
- Electric blinds, recessed spotlights and recessed strip lighting
- Full air conditioning with zone temperature control
- Two WCs
- Two eight-person (640kg) lifts with secure fob access, brushed bronze panels and mirror, natural stone flooring and a fully lit diffused feature panel
- Net internal area: 1,970 sq ft
- Floor to ceiling height: 2.6m (cat A finish)



SIXTH FLOOR

- Available as cat A or shell and core
- Bronze surrounds and frames to windows
- Electric blinds, recessed spotlights and recessed strip lighting
- Full air conditioning with zone temperature control
- Two WCs
- Two eight-person (640kg) lifts with secure fob access, brushed bronze panels and mirror, natural stone flooring and a fully lit diffused feature panel
- Net internal area: 1,389 sq ft
- Floor to ceiling height: 2.6m (cat A finish)



SEVENTH FLOOR

- Available as cat A or shell and core
- Bronze surrounds and frames to windows
- Electric blinds, recessed spotlights and recessed strip lighting
- Full air conditioning with zone temperature control
- Accessed by stair from the sixth floor lobby
- Private roof terrace via french doors
- Net internal area: 420 sq ft
- Floor to ceiling height: 2.6m (cat A finish)

